

2021 STI Data and Rankings, Louisiana



THE STATE OF STDs IN THE UNITED STATES, 2021

STDs continue to forge ahead, compromising the nation's health.

Note: These data reflect the effect of COVID-19 on STD surveillance trends.



1.6 million
CASES OF CHLAMYDIA
3.8% decrease since 2017



710,151
CASES OF GONORRHEA
28% increase since 2017



176,713
CASES OF SYPHILIS
74% increase since 2017



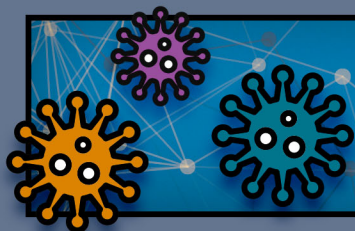
2,855
CASES OF SYPHILIS
AMONG NEWBORNS
203% increase since 2017

LEARN MORE AT: www.cdc.gov/std/

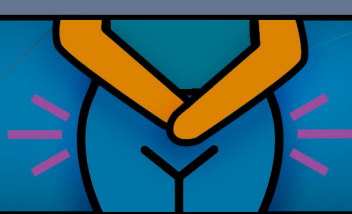
**ANYONE WHO HAS SEX COULD
GET AN STD, BUT SOME GROUPS
ARE MORE AFFECTED**

- YOUNG PEOPLE AGED 15-24
- GAY & BISEXUAL MEN
- PREGNANT PEOPLE
- RACIAL & ETHNIC MINORITY GROUPS

LEFT UNTREATED, STDS CAN CAUSE:



**INCREASED RISK OF GIVING
OR GETTING HIV**



**LONG-TERM
PELVIC/ABDOMINAL PAIN**



**INABILITY TO GET PREGNANT OR
PREGNANCY COMPLICATIONS**

**PREVENT THE SPREAD
OF STDs WITH THREE
SIMPLE STEPS:**

talk | test | treat



**Centers for Disease
Control and Prevention**
National Center for HIV,
Viral Hepatitis, STD, and
TB Prevention

THE STATE OF STDs IN

LOUISIANA,
2021

STDs continue to rise in Louisiana, despite the impact of the COVID-19 pandemic



33,759
CASES OF CHLAMYDIA

3% decrease since 2017



16,390
CASES OF GONORRHEA

36% increase since 2017



1,793
CASES OF SYPHILIS

Early Syph, 38% increase since 2017



110
**CASES OF SYPHILIS
AMONG NEWBORNS**

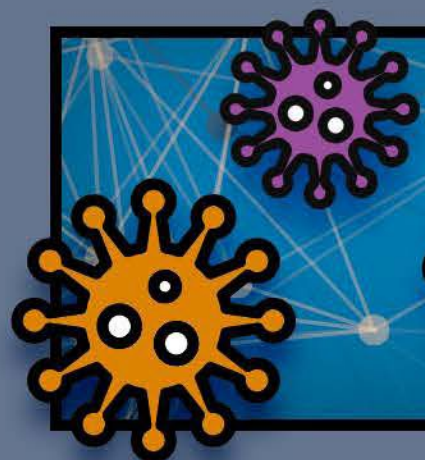
93% increase since 2017

LEARN MORE AT: www.cdc.gov/std/

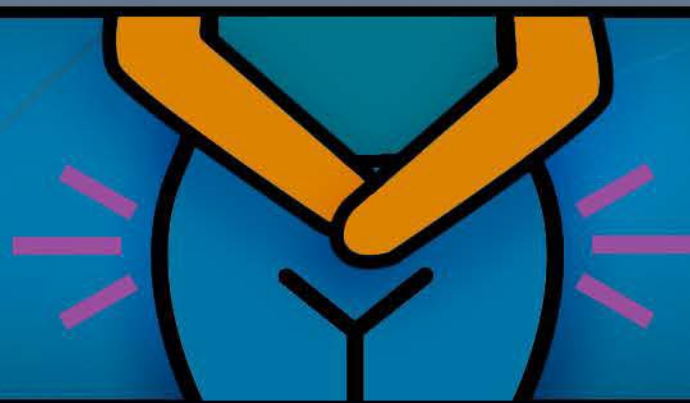
**ANYONE WHO HAS SEX COULD
GET AN STD, BUT SOME GROUPS
ARE MORE AFFECTED**

- o YOUNG PEOPLE AGED 15-24
- o GAY & BISEXUAL MEN
- o PREGNANT PEOPLE
- o RACIAL & ETHNIC MINORITY GROUPS

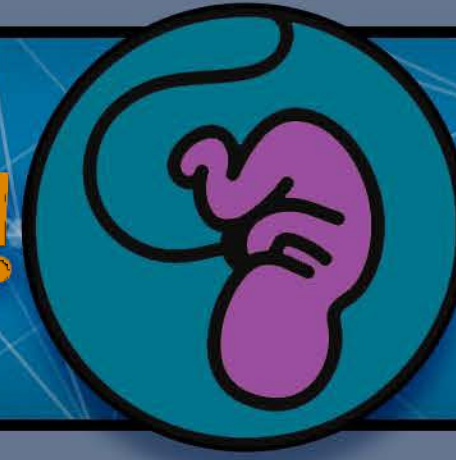
LEFT UNTREATED, STDs CAN CAUSE:



**INCREASED RISK OF GIVING
OR GETTING HIV**



**LONG-TERM
PELVIC/ABDOMINAL PAIN**



**INABILITY TO GET PREGNANT OR
PREGNANCY COMPLICATIONS**

**PREVENT THE SPREAD
OF STDs WITH THREE
SIMPLE STEPS:**

talk | test | treat



**Centers for Disease
Control and Prevention**
National Center for HIV,
Viral Hepatitis, STD, and
TB Prevention

2021 National CDC STD Rankings
Louisiana Department of Health Office of Public Health STD/HIV/Hepatitis Program
April 11, 2023

On April 11, 2023, the CDC released their *2021 STD Surveillance Report*. This report presents data for diagnoses of STDs in 2021.

CDC's Division of STD Prevention's main messages in support of this Report are:

1. **STIs show no signs of slowing in the U.S.** – The report indicates that STIs increased across the United States in 2021 – more than 2.5 million cases of chlamydia, gonorrhea, and syphilis were reported.
2. **The STD burden is not equal.** African Americans accounted for nearly a third of chlamydia, gonorrhea, and primary and secondary (P&S) syphilis cases in 2021 yet make up just 12% of U.S. population. American Indians or Alaska Natives made up less than 1% of live births, but 3.6% of congenital syphilis cases. MSM accounted for almost half of all male P&S syphilis cases and nearly a third of all reported cases of gonorrhea 2021.
3. **The nation's prevention efforts struggle to keep pace with the growing syphilis epidemic.** Syphilis has increased 447% in the last two decades with more than 176,000 cases of syphilis (all stages) reported in 2021. P&S syphilis, the most infectious stages of the disease, increased a staggering 781% since 2001. Congenital syphilis, the most tragic outcome of the epidemic, has increased 464% since 2001. Syphilis is thriving, but there is hope—the infection is completely preventable and treatable.
4. **With millions of STIs diagnosed each year—it will take all of us working together to stem this epidemic.** CDC and public health cannot do this alone. There is strength in numbers, and it is important that we (e.g., local clinics, communities, industry and private sector, healthcare providers, and public health) work together, as a collective, to discover solutions.

Comparison of 2020 to 2021 STD Cases and STD Rates

	2020			2021		
	Ranking	# Cases	Rate*	Ranking	# Cases	Rate*
P&S Syphilis	12th	704	15.1	11th	995	21.5
Congenital Syphilis	7th	63	106.9	3rd	110	191.5
Chlamydia	2nd	32,997	709.8	3rd	33,759	730.1
Gonorrhea	2nd	15,483	333.1	3rd	16,390	354.5

*Rate per 100,000

Primary and Secondary (P&S) Syphilis:

In 2021, **Louisiana ranked 11th** for primary and secondary (P&S) syphilis case rates (21.5 per 100,000 population). A total of 995 cases of P&S syphilis were reported from Louisiana in 2021. In 2020, Louisiana was ranked 12th in the nation for its P&S syphilis case rate.

Since reaching a historic low in 2000 and 2001, the rate of P&S syphilis has increased almost every year in the United States, increasing 42.4% from 2020 to 2021. Louisiana's 2021 P&S syphilis case rate was 28% greater than the national rate of 16.2 per 100,000.

STATE	P&S Syphilis Case Rate, 2021 (per 100,000)	Reported P&S Syphilis Cases, 2021
South Dakota	48.7	436
New Mexico	34.2	724
Arkansas	32.7	990
Oklahoma	30.7	1,225
Nevada	29.9	939
Mississippi	28.1	829
Arizona	27.2	1,982
Alaska	26.5	194
Oregon	22.3	949
California	22.2	8,724
Louisiana	21.5	995
USA	16.2	53,767

Congenital Syphilis:

In 2021, **Louisiana ranked 3rd** for congenital syphilis case rates (191.5 per 100,000 live births). Louisiana ranked 7th in 2020 and had a rate of 106.9 per 100,000 live births. There were a total of 110 congenital syphilis cases reported from Louisiana in 2021 and 63 cases reported in 2020.

Across the United States, the number of CS cases has increased 203% since 2017. Over 2,855 cases were reported in 2021. The rate in Louisiana was over double the national rate of 77.9 per 100,000 live births.

STATE	Congenital Syphilis Case Rate, 2021 (per 100,000 live births)	Reported Congenital Syphilis Cases, 2021
Arizona	232.3	181
New Mexico	205.7	44
Louisiana	191.5	110
Mississippi	182.0	64
Texas	182.0	680
USA	77.9	2,855

Chlamydia:

In 2021, **Louisiana ranked 3rd** for chlamydia case rates (709.8 per 100,000 population). Louisiana ranked 2nd in 2020 with a rate of 709.8 per 100,000. There were a total of 33,759 cases of chlamydia reported from Louisiana in 2021.

In 2021, a total of 1,644,416 cases of chlamydia were reported to the CDC, making it the most common notifiable sexually transmitted infection in the United States for that year. The chlamydia case rate in Louisiana was 38% greater than the national case rate of 495.5 per 100,000. Across the nation, the rate of chlamydia increased by 3%.

STATE	Chlamydia Case Rate, 2021 (per 100,000)	Reported Chlamydia Cases, 2021
Alaska	760.4	5,571
Mississippi	750.0	22,126
Louisiana	730.1	33,759
South Carolina	702.7	36,477
Georgia	629.1	67,941
USA	495.5	1,644,416

Gonorrhea:

In 2021, **Louisiana ranked 3rd** for gonorrhea case rates (354.5 per 100,000 population). Louisiana ranked 2nd in 2020 with a rate of 333.1 per 100,000 population. There were 16,390 cases of gonorrhea reported from Louisiana in 2021.

In 2021, a total of 710,151 cases of gonorrhea were reported to the CDC, making it the second most common notifiable sexually transmitted infection in the United States for that year. Across the nation, the rate of gonorrhea increased 3.6%, but in Louisiana the rate increased 6.4%. The gonorrhea case rate in Louisiana was 49% greater than the national rate of 214.0 per 100,000.

STATE	Gonorrhea Case Rate, 2021 (per 100,000)	Reported Gonorrhea Cases, 2021
Mississippi	427.7	12,617
South Dakota	363.9	3,258
Louisiana	354.5	16,390
Alabama	321.3	16,191
South Carolina	309.2	16,052
USA	214.0	710,151



Congenital Syphilis (CS)

Annual Summary - 2021

Louisiana

Pregnant Mothers
Diagnosed with Syphilis
229

Congenital Syphilis Cases

110

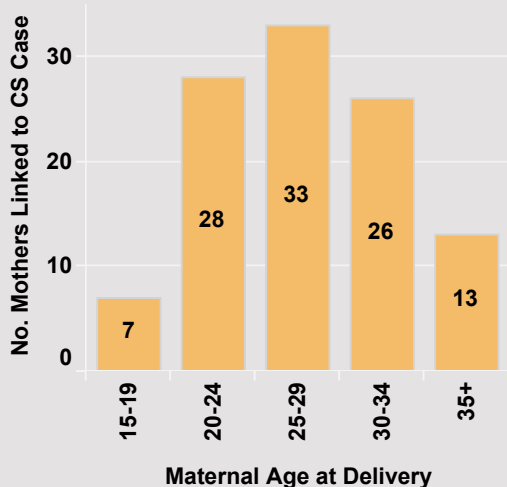
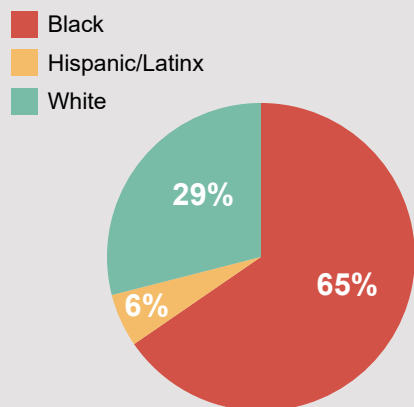
Case count reflects the total number of individual infants

Infant Deaths Linked to
Congenital Syphilis
5

Of the 107 pregnant mothers linked to a 2021 CS case:

The majority (65%) were Black women.

31% of mothers were between 25 to 29 years of age at delivery.



1 in 532
live births were born with
CS in 2021

2021 National Ranking
3rd
Highest Case Rate

Among pregnant mothers linked to a 2021 CS case:

Timely PNC **73%**

Timely PNC with
Timely Initial Test **96%**

Timely PNC with
Recommended Testing **56%**

Those who received prenatal care (PNC) at least 60 days before delivery

Those who received timely PNC and were initially tested for syphilis at least 45 days before delivery

Those who received timely PNC, a timely initial test, and were re-tested for syphilis at least 45 days before delivery

Syphilis Guidelines for Pregnant Mothers

A case of congenital syphilis occurs when a mother living with inadequately treated syphilis passes the infection on to her infant in utero or during delivery.

Congenital syphilis is completely preventable through early detection of maternal syphilis and treatment that begins at least 30 days before delivery. Current treatment guidelines are as follows:

Primary, Secondary, or Early Non-Primary Non-Secondary Syphilis

2.4 M units benzathine penicillin (1 dose)

Unknown/Late Latent Syphilis

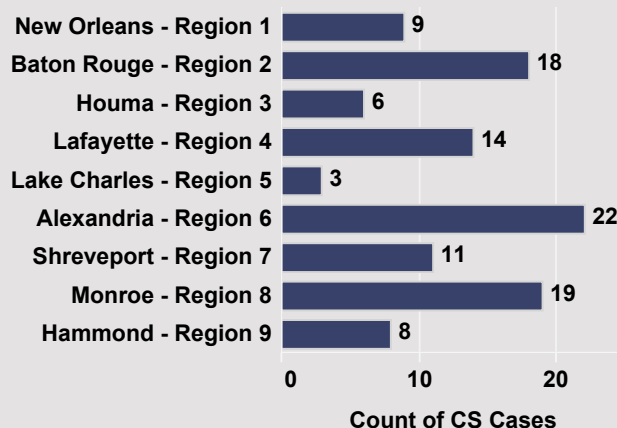
7.2 M units benzathine penicillin (3 doses, 7 days apart)

Louisiana Testing Law

Act 459 was passed in Louisiana in 2014. This requires "opt-out" syphilis and HIV testing for all women at the first prenatal visit, the 1st prenatal visit in the 3rd trimester, and at delivery (if testing/status is not noted in medical charts).

Geographic distribution

In 2021, the regions with the highest number of CS cases were Alexandria, Monroe, and Baton Rouge.





Primary and Secondary (P&S) Syphilis

Annual Summary - 2021

Louisiana

New P&S Syphilis
Diagnoses
995

P&S Syphilis
Diagnosis Rate
21.5
per 100,000 population

2021 National Ranking
11th
Highest Diagnosis Rate

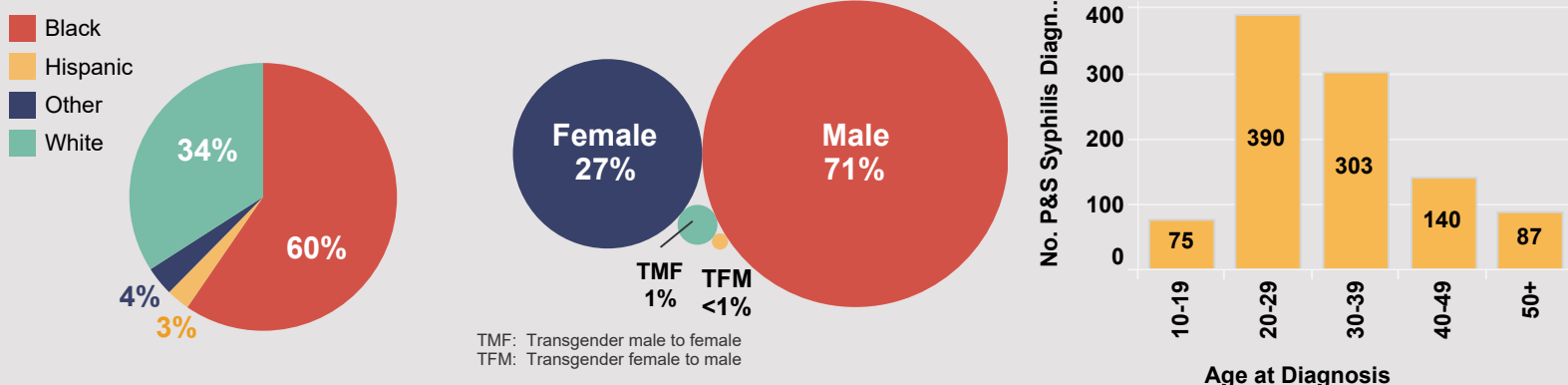
Rate calculated using estimated LA population in 2021, US Census Data

Of the 995 P&S syphilis diagnoses in 2021:

The majority (60%) of diagnoses were among Black people.

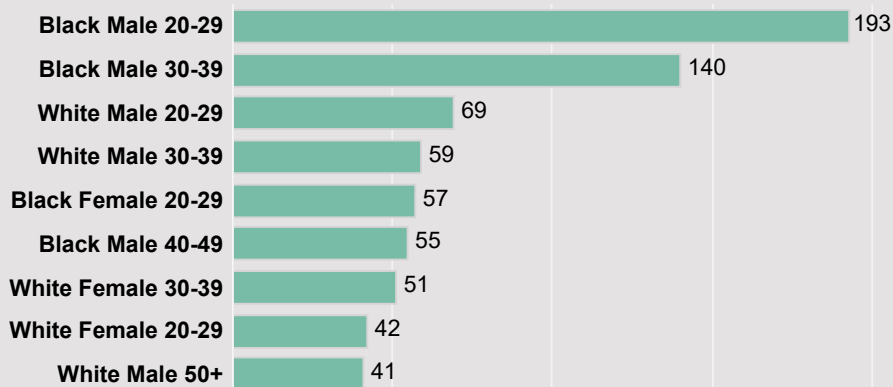
Males comprised 71% of diagnoses.

Over one third (39%) of diagnoses were among people 20-29 years-old.



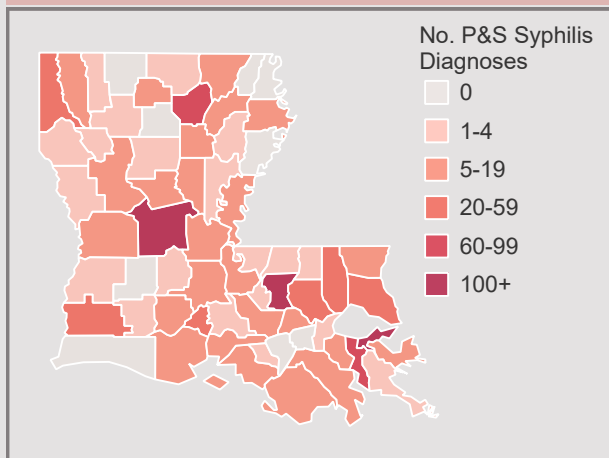
Affected subpopulations

People of color and males are more impacted by P&S syphilis than other groups. In 2021, one third of P&S syphilis diagnoses were among Black males 20-39 years-old.

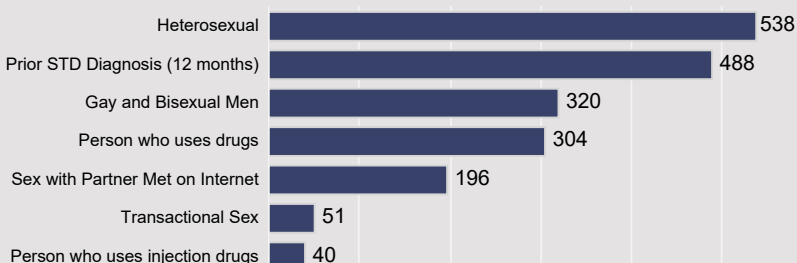


Geographic distribution

East Baton Rouge (15%), Orleans (14%), & Rapides (10%) parishes had the most P&S syphilis diagnoses in 2021.



Behavioral Factors



Syphilis Treatment Guidelines

STAGE OF SYPHILIS	REGIMEN	DOSE/ROUTE
Primary, Secondary, or Early Non-Primary Non-Secondary (<12 months)	Benzathine Pencillin G*	2.4 million units IM in a single dose
Late or Unknown Duration Syphilis (>12 months)	Benzathine Penicillin G*	7.2 million units IM administered as 3 doses of 2.4 million units IM each, at 1-week intervals

*Benzathine Penicillin G is the only CDC approved treatment for pregnant women

Interpreting the Data: It is recommended that 2021 data be interpreted with caution due to the impacts of the COVID-19 pandemic.



Chlamydia Annual Summary - 2021

Louisiana

New Chlamydia Diagnoses
33,759

Chlamydia Diagnosis Rate
730.1
per 100,000 population

2021 National Ranking
3rd
Highest Diagnosis Rate

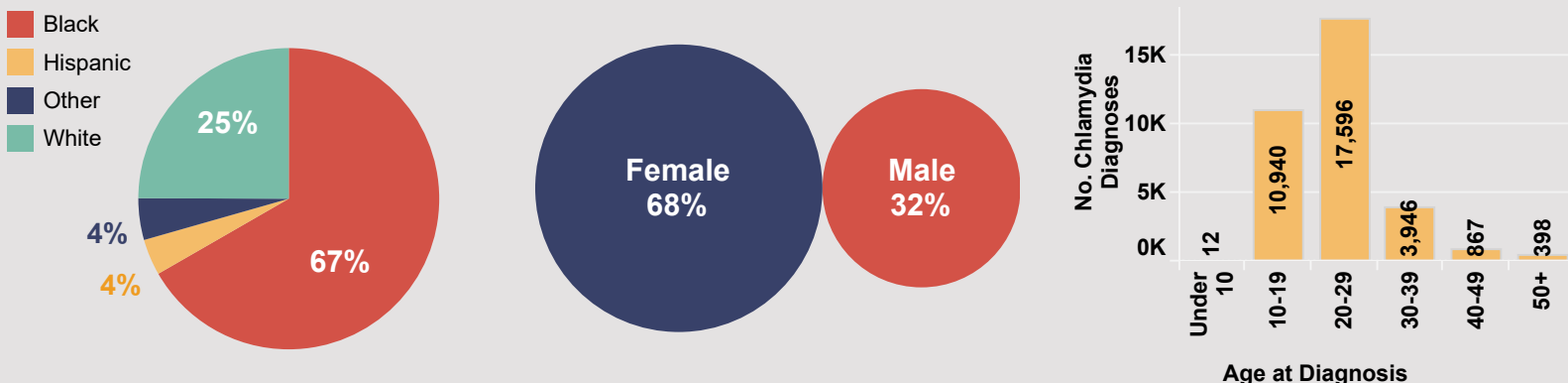
Rate calculated using estimated LA population in 2021, US Census Data

Of the 33,759 chlamydia diagnoses in 2021:

The majority (67%) of diagnoses were among Black people.

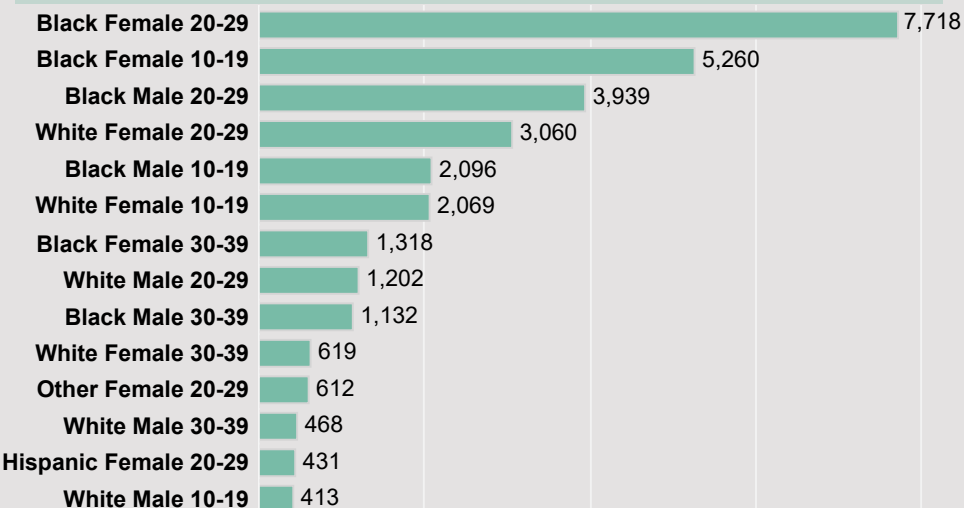
By sex at birth, females comprised 68% of diagnoses.

The age group with the most diagnoses was people 20-29 years-old (52%).



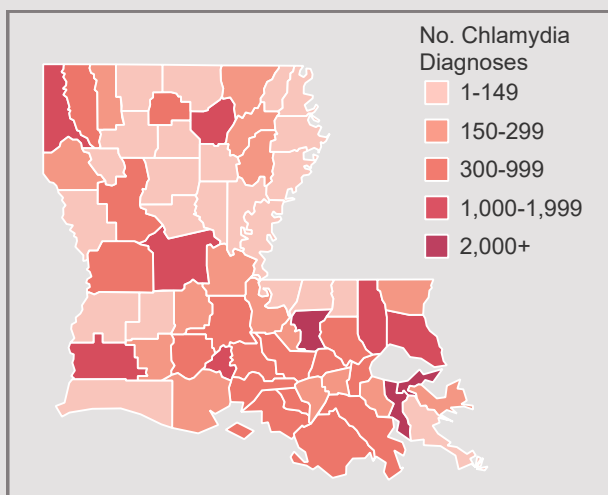
Affected subpopulations

People of color and young females are more impacted by chlamydia than other groups. In 2021, 38% of chlamydia diagnoses were among Black females 10-29 years-old.



Geographic distribution

In 2021, the highest number of chlamydia diagnoses were in East Baton Rouge (14%), Orleans (13%), & Jefferson (9%) parishes.



Chlamydia Screening and Treatment Guidelines

Screening Recommendations:

All sexually active women and pregnant women, under 25 years of age, and sexually active women and pregnant women, 25 years of age and older, if at increased risk.

At least annually for sexually active gay and bisexual men (GBM).

Treatment:

Adults and adolescents:

Recommended: Doxycycline 100 mg orally 2x/day for 7 days

Alternatives: Azithromycin 1 gm orally in a single dose OR Levofloxacin 500 mg orally 1x/day for 7 days

Pregnancy:

Recommended: Azithromycin 1 gm orally in a single dose

Alternatives: Amoxicillin 500 mg orally 3x/day for 7 days



Gonorrhea Annual Summary - 2021

Louisiana

New Gonorrhea Diagnoses
16,390

Gonorrhea Diagnosis Rate
354.5
per 100,000 population

2021 National Ranking
3rd
Highest Diagnosis Rate

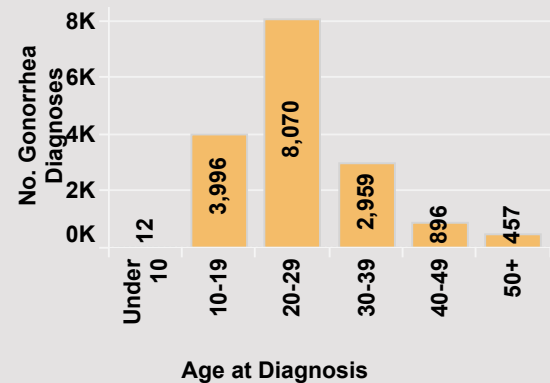
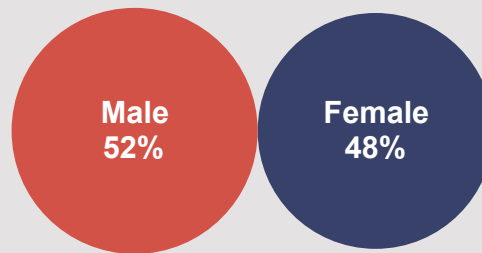
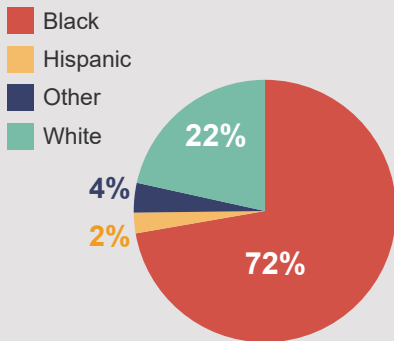
Rate calculated using estimated LA population in 2021, US Census Data

Of the 16,390 gonorrhea diagnoses in 2021:

The majority (72%) of diagnoses were among Black people.

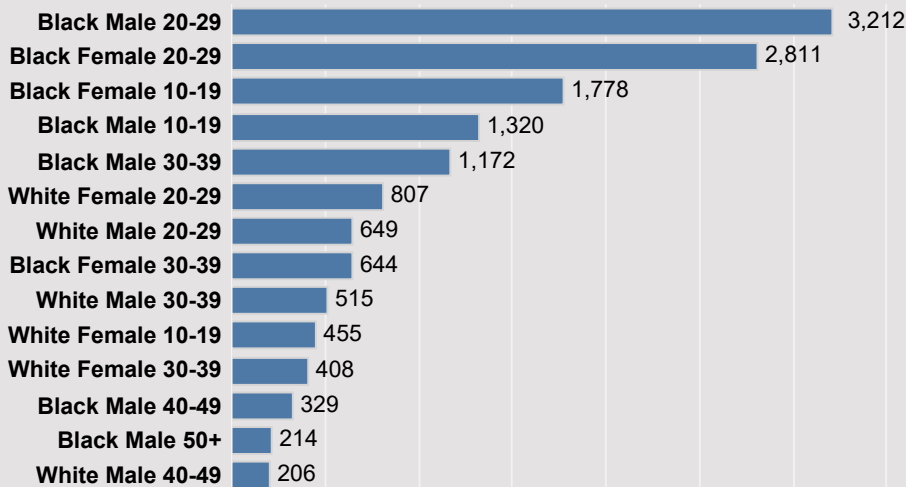
By sex at birth, males comprised 52% of diagnoses.

Almost half (49%) of diagnoses were among people 20-29 years-old.



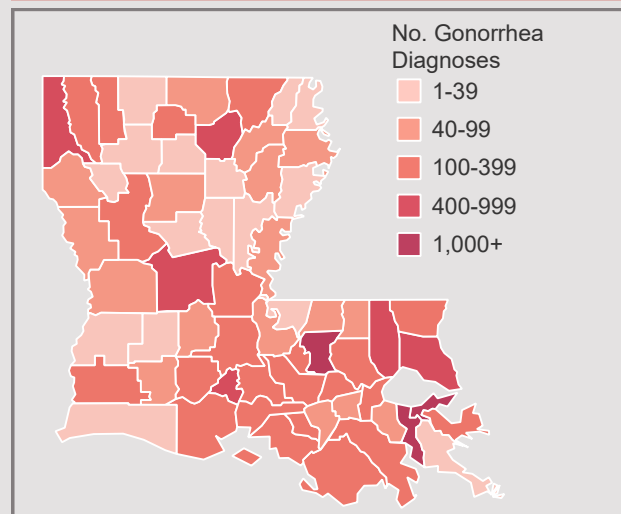
Affected subpopulations

Young people of color are more impacted by gonorrhea than other groups. Over half (56%) of gonorrhea diagnoses in 2021 were among Black people 10-29 years-old.



Geographic distribution

In 2021, the parishes with the most gonorrhea diagnoses were East Baton Rouge (16%), Orleans (14%), and Jefferson (9%) parishes.



Gonorrhea Screening and Treatment Guidelines

Screening Recommendations:

All sexually active women and pregnant women, under 25 years of age, and sexually active women and pregnant women, 25 years of age and older, if at increased risk.

At least annually for sexually active gay and bisexual men (GBM).

Treatment:

Most cases can be treated with a single 500mg injection of ceftriaxone.

- Help minimize the threat of drug-resistant gonorrhea
- Test-of-cure for throat infections only
- Retest patients 3 months after treatment
- Treat partners