

Highlights

[Construction Updates.....2](#)
[Around the Airport.....6](#)
[Community Outreach.....7](#)

JFK Pulse

As construction moves along, we continue to urge our airport community and employees to stay updated with the latest information as changes happen regularly.

[Click Here to Subscribe](#)



Scan the QR code to subscribe to the JFK Pulse updates!

A Message from our Leaders



Teresa Rizzuto, General Manager, JFK Airport

With the weather warming up and summer just around the corner, I wanted to take a moment to express my gratitude for your unwavering dedication and hard work as we navigate through the transformative phase of our airport's redevelopment. Your commitment and resilience have been instrumental in driving our progress, and I am incredibly proud of each and every employee at JFK Airport. As you are well aware, JFK is currently undergoing a monumental redevelopment initiative with a substantial investment of \$19 billion dedicated to reshaping the future of air travel. This project isn't just about rebuilding, it's about elevating the entire passenger experience and positioning our airport as a world-class hub for years to come. The safety and security of our passengers remain our top priority and we are working tirelessly to maintain the highest standards of safety throughout our facilities.

In April, we celebrated the beginning of a massive solar project at the airport's long-term parking lot. Located in Lot 9, the JFK solar carport will be erected as a canopy providing the added benefit of covered parking for 3,000 vehicles. The parking lot canopy with solar panels and accompanying battery storage system will reduce greenhouse gas emissions by approximately 6,000 metric tons annually. As stewards of the environment, we are committed to implementing sustainable practices and initiatives across all aspects of our operations: whether it's reducing energy consumption, minimizing waste, or promoting eco-friendly alternatives, your dedication to sustainability is helping to create a greener and more sustainable future for generations to come.

Jessica Forse, Program Executive, JFK Redevelopment

I'm thrilled to share that we are making significant strides in our redevelopment efforts, and as we gear up for the summer season, I wanted to highlight some of the expected impacts from construction that we will see. Our terminals are undergoing a remarkable transformation, with sleek designs and upgraded facilities aimed at enhancing efficiency and passenger comfort. As an entirely new JFK airport comes together, we recognize the work being done across all projects and the potential impact it will have on customers and employees this summer. Expect changes to the roads at the terminals and frontages that will reduce

their capacity to handle vehicles. You can expect periodic lane closures on the highways accessing the terminal areas and long-term traffic patterns and detours. Beginning in June, if you are traveling from Long Island to Terminal 1, you will be detoured off of the JFK Expressway and should expect at least 10- 15 minutes of extra travel time. An entirely new roadway network is under construction – we are replacing the old and confusing airport roadways, with a new and far more efficient road network to get travelers to the terminals. Although the next two years will be challenging, we are confident that once people see the new JFK, they'll agree

that the pain will be worth the gain. As we continue on this exciting journey, I want to express my heartfelt appreciation for your continued hard work, dedication, and resilience. Each one of you plays a pivotal role in shaping the future success of our airport, and I am truly grateful for the opportunity to work alongside such a talented and committed team. Together, there's no limit to what we can achieve. Thank you for all that you do, and here's to a summer filled with success, growth, and endless possibilities!



Construction Updates

[Go to Page 1](#)


Renderings provided by: [TotalEnergies](#)

JFK Long term Parking Lot - Solar Project

The Port Authority of New York and New Jersey and the New York Power Authority just began construction of New York State's largest onsite solar plus storage project: a solar carport canopy at John F. Kennedy International Airport. Once operational, the solar carport project will generate electricity to help power the AirTrain and to reduce electricity costs for residents of low-income neighborhoods in Queens. The JFK solar carport will be erected as a canopy, providing the added benefit of covered parking for approximately 3,000 vehicles.

The Port Authority, in partnership with the New York Power Authority, contracted TotalEnergies, a global leader in solar power, to build and operate the JFK International Airport solar project. With enough solar panels to cover an area large enough for 11 football fields, the solar carport will generate approximately 12-megawatts of onsite power and will include a 6-megawatt community solar generation facility. The project will also include 7.5 megawatts of battery storage that will be used to help reduce airport energy use during peak periods.

When complete, the JFK solar carport will produce enough clean energy to reduce greenhouse gas emissions by more than 6,000 tons annually – the greenhouse gas equivalent of 26 million miles driven by an average gasoline-powered passenger vehicle – and will contribute substantially to the Port Authority's goal of reaching net-zero greenhouse gas emissions across the agency's facilities by 2050. Additionally, the project will enable designated low-income communities in Queens to support clean energy and reduce their utility bills.



JetBlue's Terminal 5 - Gate 30

In mid-May, a ribbon cutting was held at JetBlue's Terminal 5 celebrating the reopening of Gate 30. When the first T6 gates open in 2026, these two impeccably designed terminals will allow customers and employees seamless connection. When complete, Terminal 6 will connect seamlessly between JetBlue, Lufthansa, Swiss

International Airlines, Austrian Airlines, and Brussels Airlines. This is an important milestone for the project as the relocated Gate 30 opens up space for construction of the future T6 East Concourse. Once complete it will be home to three new gates and world-class passenger amenities. Work on the area will continue with relocation of

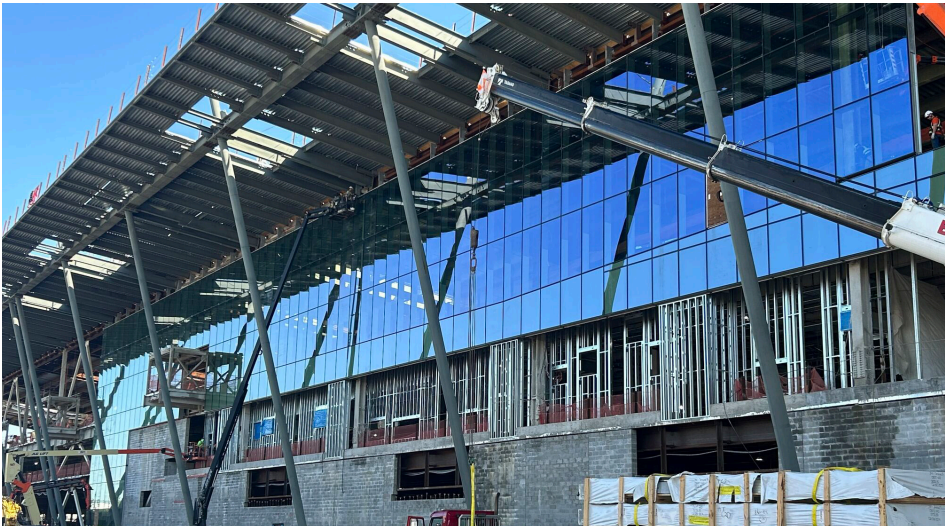
Coming Soon - Delta One Premium Lounge



JFK will host the inaugural premium lounge, a sweeping 38,000-square-foot space that will feature a full-service brasserie and a casual, chef-assisted market with open kitchens, dedicated wellness areas

and more. Just like Delta Sky Clubs, no two premium lounges will be alike; this new location will include elements inspired by and unique to New York City. The much-anticipated premium lounge will make its debut early

summer 2024. At 38,000-square-feet (including a year-round terrace), JFK's premium lounge will be the largest in the Delta network.

Construction Updates, continued[**Go to Page 1**](#)**Terminal 6 - Curtain Wall**

In mid April, the curtain wall installation for the future T6 arrivals exit began.

The effort to weathertight the terminal building will continue during the summer with the idea to have the terminal structure weathertight later this summer to facilitate the start of interior fit out.

**M/WBE Milestone**

In April, the Port Authority announced a historic milestone in the ongoing transformation of JFK International Airport, where a record \$2.3 billion in contracts have been awarded to Minority and Women-Owned Business Enterprises (M/WBE). This is the largest participation of MWBE firms on any public-private partnership project in New York State history. With construction of new airport facilities fully underway, M/WBE participation at JFK will continue to break records until the redevelopment is substantially

complete, expected in 2028. JFK redevelopment also demonstrates a significant focus on working with local contractors, awarding more than \$950 million in contracts to Queens-based businesses to date. With this announcement, JFK has surpassed LaGuardia Airport redevelopment, which set the previous New York State record for MWBE participation in a public-private project with \$2.2 billion in contracts awarded.

As the \$19 billion JFK project moves forward, additional contracts with MWBE firms will be awarded to meet with the Port Authority's goal of 30 percent MWBE participation for the agency's capital projects. The Port Authority is working closely with its private terminal developer partners – the New Terminal One, Delta Air Lines and JFKIAT, JFK Millennium Partners, and American Airlines – to engage minority and women-owned businesses along with local businesses in every aspect of the redevelopment program. To date, 680 unique M/WBEs have been awarded contracts at JFK along with more than 200 unique businesses

based in Queens. The latest M/WBE and local business participation milestones were celebrated at JFK's Building 111, a 76-year-old office building on the airport's north side that underwent extensive renovations in order to create a collaborative workspace for the JFK Redevelopment construction and program management teams to work alongside each other, including the private terminal developers who are financing and overseeing the terminal projects. The multi-million dollar renovation of Building 111 was designed and constructed mainly by M/WBE and local contractors. Sabor Restaurant & Bakery, a local, Queens-based M/WBE food vendor, will operate out of a brand new Grab & Go venue.

To increase M/WBE participation at the JFK Redevelopment Program, and across the agency, the Port Authority and its private terminal partners at JFK hosted a variety of capacity-building and technical training programs that prepared firms to be successful in navigating what can at times be complex airport-related procurements.

Construction Updates, continued

[Go to Page 1](#)

Utility Connections Progress



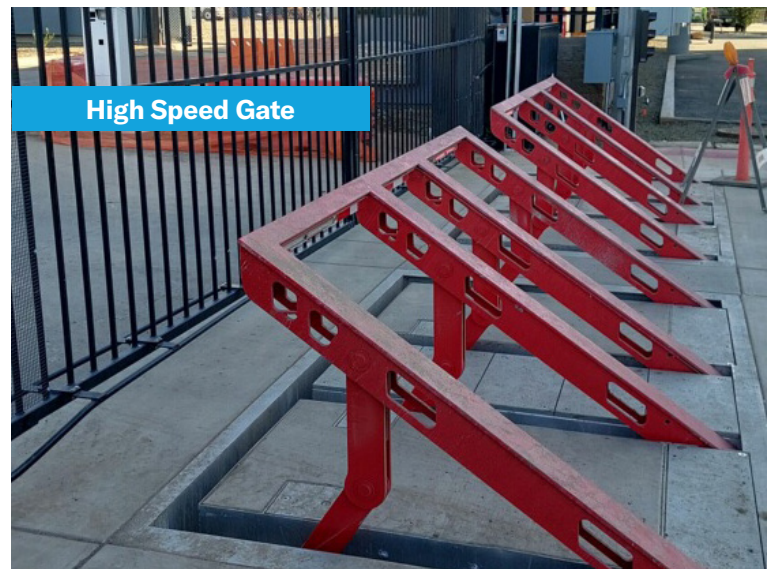
The Contractor, Grace Industries, will focus on bringing the Medium Temperature Hot Water (MTHW), Chilled Water (CHW), 15kV duct banks, and 5kV duct banks across the Van Wyck throughout the rest of the spring and into mid-summer.

At that point, they will turn East, and bring the Medium Temperature Hot Water and Chilled Water across to JMP, which will take a good part of the fall. In the fall, they will tie the CHW and MTHW into the KIAC plant, thus providing a new connection between the KIAC plant and the new T1 and T6.



Central Substation 2

The specified gate is required to meet all specified security, functional, protective and operational requirements; New Terminal One delivery trucks will be going through the gates to make delivery to their loading dock and the gate has to be a high-speed gate with the required crash rating to meet number of operation cycles timely and efficiently, while minimizing required maintenance interval due to heavy use. The new high speed gate will be installed at the entrance to the new Central Substation 2, a new 40MVA substation currently under construction that will be providing power to the NTO and other JFK Redevelopment infrastructure.



AN ENTIRELY NEW JFK SUMMER TRAVEL TIPS DURING CONSTRUCTION:

- ✓ **TAKE PUBLIC TRANSIT (A/E/J/Z SUBWAY OR JUST 20 MINS TO AIRTRAIN JFK VIA LIRR FROM GRAND CENTRAL / PENN / ATLANTIC).**
- ✓ **GET PICKED UP OR DROPPED OFF AT EASY LEFFERTS BLVD AIRTRAIN WAITING LOT (FREE 8 MINUTE TRAIN RIDE TO TERMINALS).**
- ✓ **IF YOU MUST DRIVE, LEAVE PLENTY OF EXTRA TIME AND PRE-BOOK PARKING TO SAVE MONEY AND GUARANTEE A SPOT.**
- ✓ **USE [CONSTRUCTION.JFKAIRPORT.COM](https://www.construction.jfkairport.com) FOR THE LATEST TRAVEL IMPACTS, ROADWAY CHANGES, AND RECOMMENDATIONS FOR TRAVELERS.**

JFKR Prepares for a Busy Summer

The Port Authority of New York and New Jersey recently announced a package of measures to help passengers navigate construction-related traffic delays in getting to and from John F. Kennedy International Airport's airline terminals this summer. A record number of travelers will take to the skies while the airport's \$19 billion transformation project, including an entirely new roadway network, reaches peak construction activity. As the summer travel season unfolds, additional steps to mitigate the impact of construction on traffic will be deployed as needed. As was done at LaGuardia Airport, the Port Authority and its private partners are building new passenger facilities, parking garages and roadways while maintaining full flight operations at JFK. Building on lessons learned at LaGuardia, the Port Authority is deploying a coordinated response to manage potential traffic issues with the capability to predict, assess and quickly adapt to changing traffic conditions. Our traffic

management strategy this summer includes:

Proactive traffic management:

- Airport Operations Center staffed 24/7 to support airport-wide coordination and active traffic management, anticipating peak activity and implementing traffic mitigations in response to increased wait or queues
- Real-time coordination 24/7 for flight activity, traffic delays, public messaging, and mapping platform updates
- Facilitate adjustments in roadway construction activity to meet operational needs of airport community

Increased staffing to keep traffic and passengers moving to their destinations:

- Frontline staff will be increased, including Port Authority police officers and Port Authority operations staff, additional traffic managers at terminal frontages, tow trucks pre-positioned, additional taxi dispatchers and park-

ing attendants, and customer service representatives at all terminals and across the AirTrain system

"From the moment we unveiled plans to transform JFK Airport with a once-in-a-generation investment, our commitment has been to create the world-class international gateway this region deserves, and we are thrilled by all of the momentum," said **Port Authority Executive Director Rick Cotton**. "As construction ramps up to peak levels this summer while a record number of passengers travel through the airport, we ask our passengers to use public transit, get dropped off or picked up at the free Lefferts Blvd. AirTrain station, and if you must drive yourself, then expect traffic and absolutely pre-book parking to guarantee a spot is available. We understand there will be inconvenience for travelers this summer, but the end result will be a spectacular new airport that will be easier to reach and a pleasure to use."

Around the Airport

[Go to Page 1](#)

Original Sculptures at Pan American Terminal

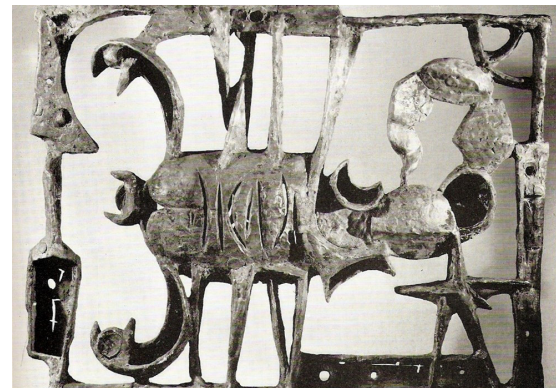
Milton Hebard's 1960 Zodiac Maquettes

If you visit Building 111 on airport, you'll be greeted by 12 sculptures strategically placed in the lobby. The series titled "Zodiac" was created by Milton Hebard in the early 1960's for the Pan Am Worldport.

The bronze sculptures stretched 200 feet long and 24 feet high depicting the 12 signs of the zodiac. Hebard disclosed that the architect Walter Prokosch who designed the Worldport had asked him to create a large sculpture for the front of the terminal. Hebard wrote that he came up with the idea for the "Zodiac" because they seemed "the most universal idea for an air terminal." This "imaginary belt in the heavens" with its 12 figures covers the passage of time, and space in time. His greatest vision for the "Zodiac" was that these mythical figures and beasts were seen as tiny stars across the great gulfs of space, used to guide mariners and sometimes nations with the prayers to the various "gods". The task of completing these sculptures took three years while Hebard worked

at the American Academy in Rome. Each bronze figure ranges from 15 to 20 feet long, so big in fact that he had to create each sculpture at one-third their actual size—he called these models "maquettes".

The full-size sculptures, over 2500 lbs. each, that were once in the Pan Am building were taken down by Delta in 1991 and stored by the Port Authority of New York and New Jersey in a hangar at JFK Airport where they still reside. For more than 30 years Hebard's lengthy Zodiac Screen hung against a curtain of glass at the entrance to the international terminal of the old Pan American terminal at JFK Airport and for many arriving foreign travelers it was their first glimpse of art on American soil. The maquettes, or small-scale models, are currently on display in the lobby of Building 111. The photos are of the bronze maquettes from the Zodiac screen. These pictures were taken by the Nordness Gallery for their exhibition Sculpture at Idlewild, May 9 - May 28, 1960.



Community Outreach Events

[Go to Page 1](#)

Pictured from left to right: Stacey Gilbert, Luis Flores, Natasha Turner, Akshar Patel, Rachelle Antoine, Hersh Parekh, Bridgette Allen, Carl Lewis

In mid-April, the JFK Redevelopment along with York College conducted the final day of the Spring Cohort for the JFK Redevelopment Aviation & Aeronautics Academy at CUNY York College. Immediately following the last session was a graduation hosted for the students to share their experience and accomplishments

throughout the spring academy cohort. Also in mid-April, The JFK Redevelopment Program hosted the JFK Redevelopment Community Advisory Council Meeting at Roy Wilkins Recreation Center in Jamaica, NY. During the meeting Dr. Stacie NC. Grant, JFKR Facilitator, delivered opening remarks. Congressman

Gregory W. Meeks and Queens Borough President Donovan Richards welcomed attendees as Co-Chairs. Rachelle Antoine & Akshar Patel, Co-Managers of External Affairs & Community Outreach, greeted participants.

The agenda included a session for public questions and answers. Updates were provided by the Port Authority of New York & New Jersey.

The meeting discussed JFK Redevelopment Diversity in Contracting and Local Workforce Updates given by the compliance consultants RF Wilkins and Crescent Consulting.

Further, public questions and answers were addressed followed by updates from Terminal Developers and project progress were shared. Community initiatives were also discussed.

Lastly, the meeting covered JFK Redevelopment Community Engagement & Outreach efforts. There were over 200 attendees.

JFK Redevelopment Community Information Center

144-33 Jamaica Ave. Jamaica, NY
Phone: 718-244-3834

Hours of Operation

Tuesday 9 am – 5 pm
Wednesday 9 am – 5 pm
Thursday 9 am – 5 pm

*Mondays and Fridays are virtual work days for the Community Information Center staff

www.anewjfk.com

jfkdevelopment@panynj.gov

Upcoming Events

ACDBE Aiport Concession Disadvantaged Business Enterprise Certification Webinars

June 13 & July 11th, 12PM

Join us In-Person or Virtual at the JFK Redevelopment Community Information Center to learn how to obtain your Airport Concession Disadvantaged Business Enterprise (ACDBE) Certification with the Port Authority of NY & NJ.

For more information, contact our community outreach office. Want more events? Visit our [community outreach public events calendar](#)