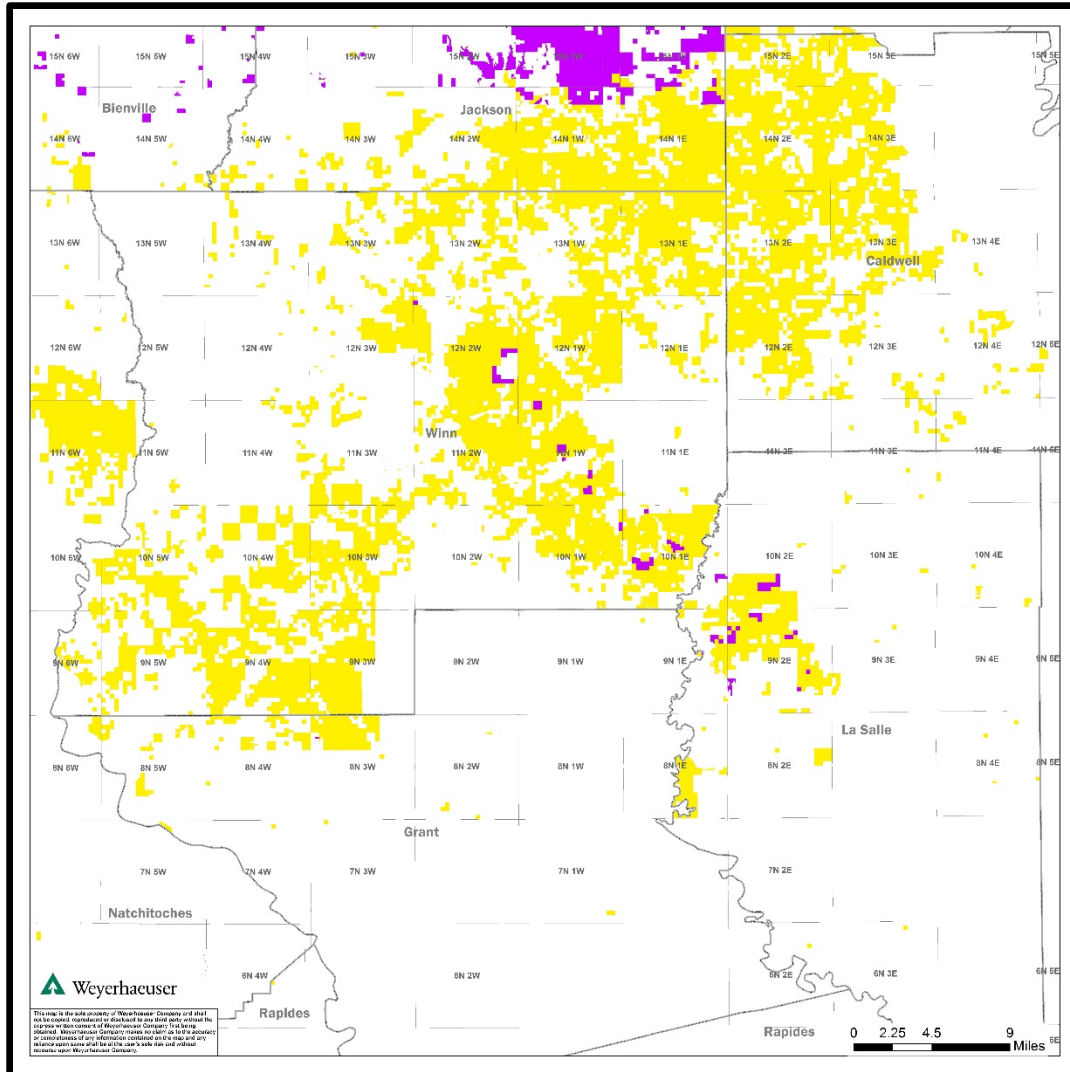


# Winn & LaSalle Parishes, Louisiana

## 100,000+ acres



### Suggested Deal Terms:

- Option with minimum size of 10,000 acres
- Minimum Lease Commitment: 10% of Option area
- Option and Lease terms may be offset with 3D seismic commitment

### Technical Presentation Available Upon Request

This information is not intended to be and should not be interpreted to be an exclusive offer to your company. Unless and until an Option/Lease Agreement or binding letter of intent has been executed between your company and Weyerhaeuser, neither your company nor Weyerhaeuser will be under any legal obligation whatsoever to conclude a transaction. Weyerhaeuser reserves the right, at its sole discretion, to reject any and all offers and to terminate discussions concerning a potential transaction at any time without liability or obligation of any nature whatsoever.

**Contact: Pamela J. Reed, CPL**  
**Land Manager – Energy & Natural Resources**  
**(206) 539-4432**

[Pamela.Reed@Weyerhaeuser.com](mailto:Pamela.Reed@Weyerhaeuser.com)

# Executive Summary: Cotton Valley Calvin and Knowles

**Play Concepts:** The Eocene (Wilcox), Upper Cretaceous (L. Tuscaloosa & Annona Chalk), Lower Cretaceous (Glen Rose, Mooringsport, Rodessa, James, Sligo, & Hosston) and Jurassic intervals (Calvin, Bossier & Knowles) are productive and prospective on the 100,000+ acre mineral block.

**Drill Depth:** 1500' – 20,000' MD

**Reserve Potential:** Oil and Gas with Multiple TCFGE

**Prospects & Leads:** Weyerhaeuser has developed prospects and leads in most of the prospective formations on the mineral block.

## Examples:

**Wilcox (1,500' – 4,000' PTD):** Wilcox oil production is widespread on Weyerhaeuser's Winn/La Salle Parish mineral block. A possible un-tested Wilcox structural high has been identified on reprocessed 2D seismic data.

**L. Tuscaloosa Channel Lead (6,500' PTD):** Reprocessed 2D data shows a very bright amplitude in the L. Tuscaloosa Formation with a possible up-dip trap.

**N. Colgrade Prospect (Sligo 10,200' PTD):** Reprocessed (2006) 2D seismic data and well control was utilized to develop the N. Colgrade Prospect. Seismic data shows a strong trough amplitude that is coincident with a faulted structural high. The seismic amplitude is very similar to reprocessed 2D seismic over Black Lake Field (1 TCFG + 64 MMBO) located 25 miles due west of the prospect. At Black Lake a strong trough amplitude coincides with the main productive reef/grainstone interval developed at the very top of the Sligo Formation.

**SE Dodson Prospect (Calvin & Knowles 14,200' PTD):** Re-drill of a potential gas productive Calvin Ss interval (1.1 MMCFGPD on test) and Knowles Ls interval (1.6 MMCFGPD on test) that was not completed due to poor cement around production casing.

**3D Seismic Data:** Only 25% of Weyerhaeuser's Winn/La Salle Parish mineral block is covered by 3D seismic. With production established from 1,500' - 14,000' it is probable that additional reserves would be found with broader 3D seismic coverage.