

Private Sector Engagement and Information Sharing with Law Enforcement

To combat maritime trafficking of wildlife



Dr. Tim Wittig

Global Wildlife Program webinar
26 February 2019

PROBLEM STATEMENT

Effectively combatting wildlife trafficking requires collective action across a complex multi-stakeholder environment.

Q: How do we leverage the strengths of different stakeholder groups to take collective action against IWT?

LAW ENFORCEMENT

- Has authorities & capabilities
- Lacks interest, mandate & information

NGOs

- Lack authorities & capabilities
- Have interest, mandate & information

PRIVATE SECTOR

- Has authorities & capabilities (some)
- Lacks interest, mandate, & information

PROBLEM STATEMENT

Effectively combatting wildlife trafficking requires collective action across a complex multi-stakeholder environment.

Q: How do we leverage the strengths of different stakeholder groups to take collective action against IWT?

A: Combination of

- 1. High Level Commitments**
- 2. Regular Intelligence Production & Sharing**
- 3. Direct Coordination with Law Enforcement**

CASE STUDY:



TRANSPORT TASKFORCE



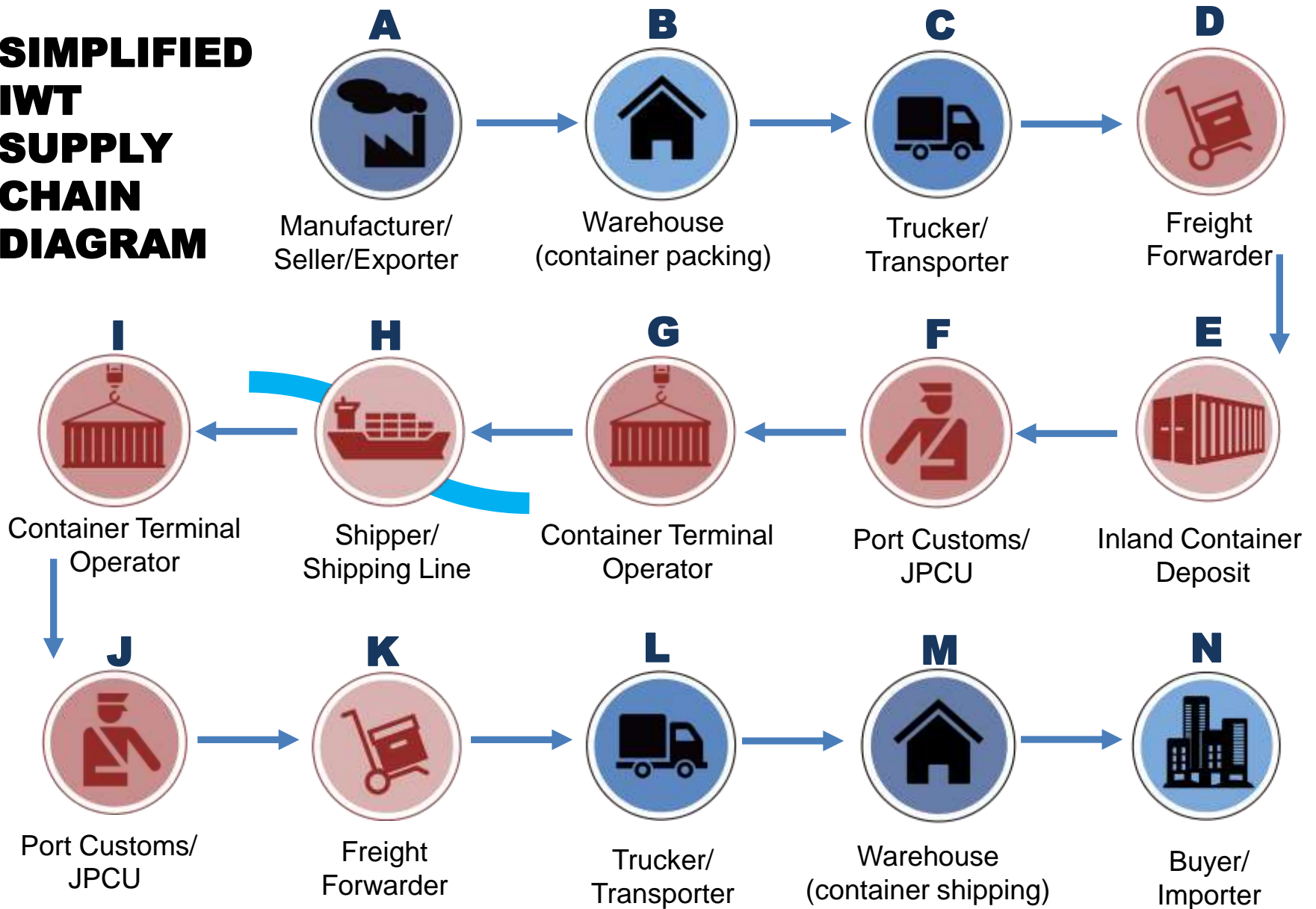
CASE STUDY:

The United for Wildlife Transport Taskforce
How it Works, and Why

130+ Member companies, representing
est. 80% of global maritime shipping industry (by volume)



SIMPLIFIED IWT SUPPLY CHAIN DIAGRAM



= UFW TASKFORCE MEMBER NETWORK

1. High Level Commitments

High Level Commitments

For **Member companies** to:

- **Receive** relevant IWT intelligence
- **Action** intelligence to detect & deter IWT activity in company networks
- **Report** suspicious activity to authorities
- **Adopt & implement** zero tolerance policies and relevant employee training
- **Participate** in periodic formal meetings & events



*Buckingham Palace
Declaration (2016)*

High Level Commitments

For **the Taskforce** to:

- Centrally **compile & aggregate** IWT intelligence
- **Disseminate** timely & actionable intel to members
- **Catalyze enforcement outcomes** against wildlife trafficking networks via public, private, and NGO partners

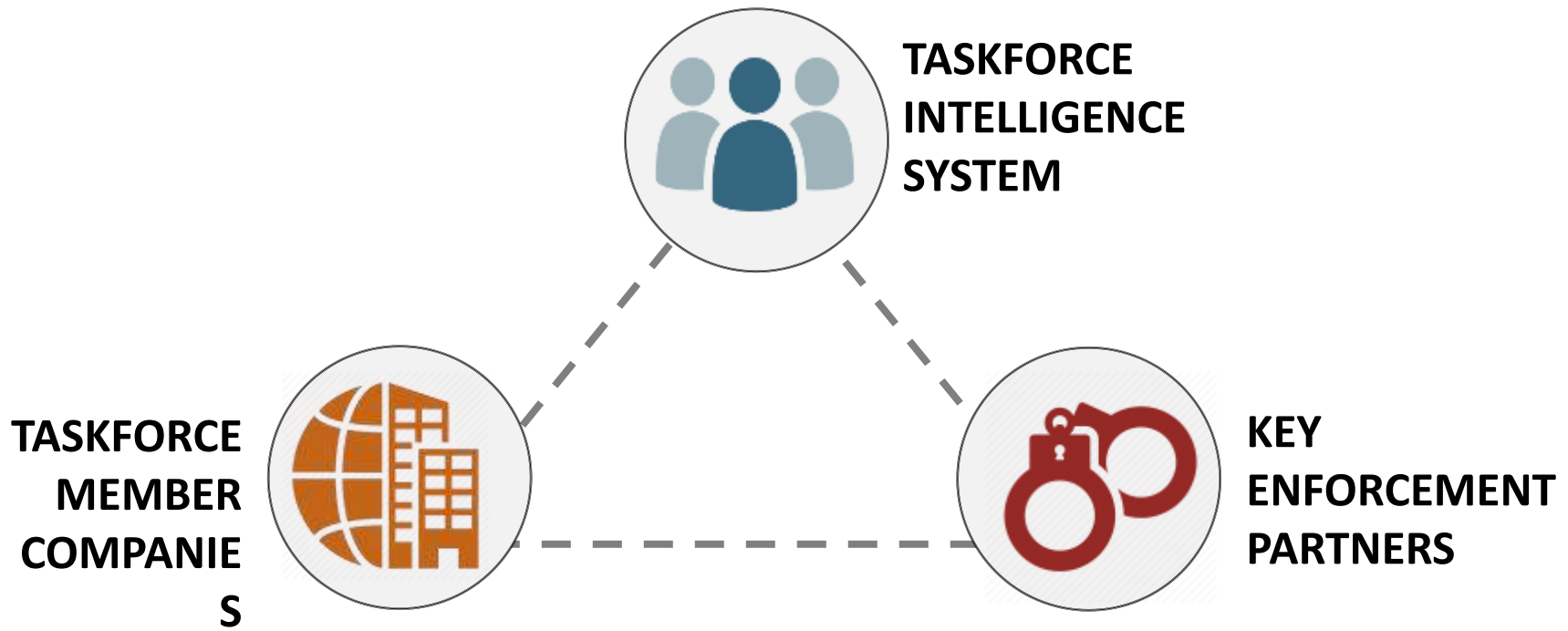


*Buckingham Palace
Declaration (2016)*

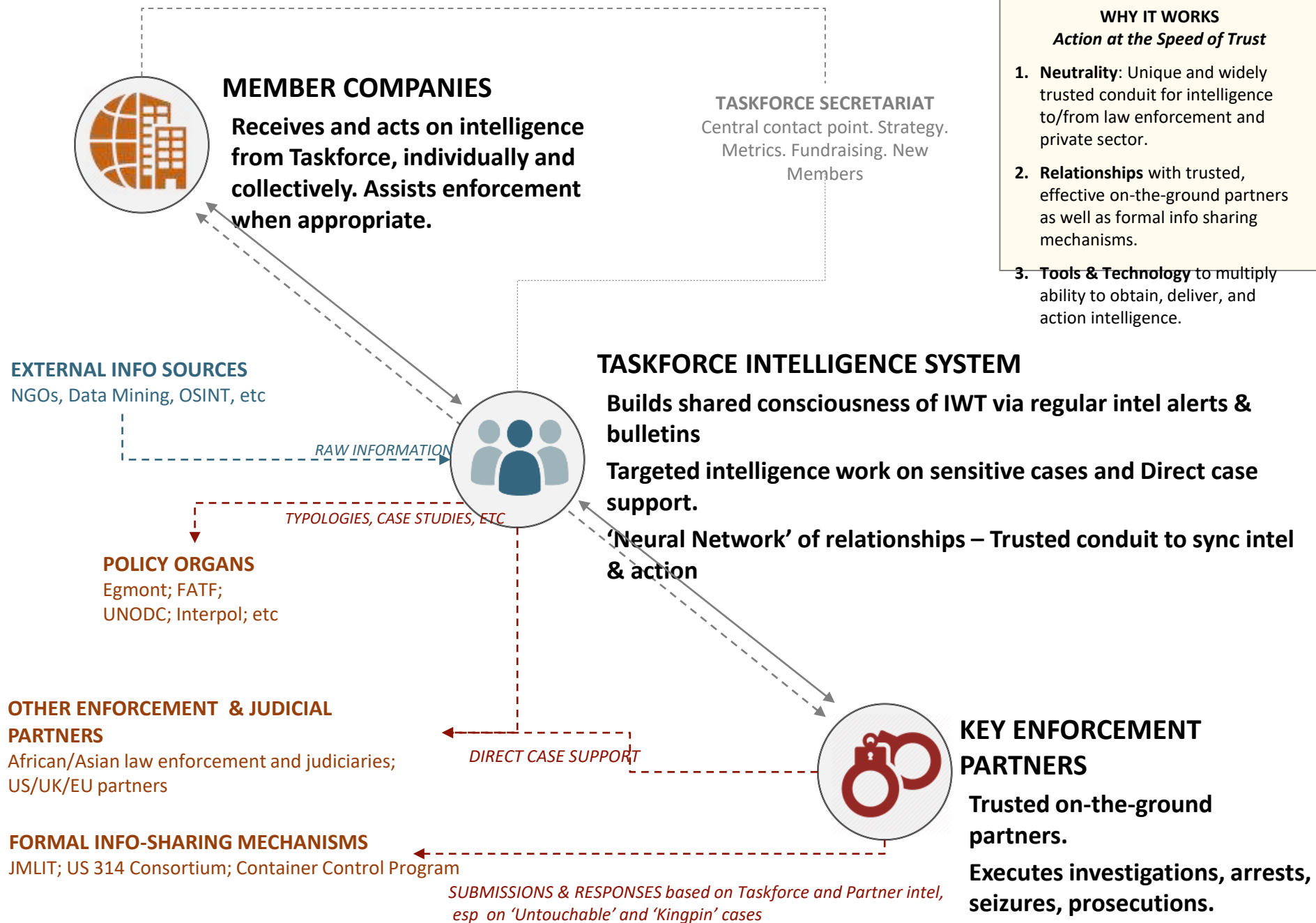
2. Regular Intelligence Sharing

Regular Intelligence Sharing

The Taskforce Intelligence Sharing System has evolved into a **global neural network** against wildlife trafficking



TASKFORCE INTELLIGENCE SYSTEM



Regular Intelligence Sharing

- Monthly Intelligence Bulletin
- Alerting on latest IWT Risk Trends
- Alerting on **IWT Convergence** patterns
- Online database of '**Red Flag**' Typologies / commodity and concealment patterns



RISK TRENDS & DRIVERS

Emerging wildlife trafficking trends and focus areas

Uganda, Nigeria, and Mozambique now priority risk countries in Africa for wildlife trafficking

Uganda, Nigeria, and Mozambique are likely now Africa's most significant export countries for illicit shipments of ivory, rhino horn,

TYPOLOGIES & RED FLAGS

Key wildlife trafficking red flag risk indicators observed since most recent Bulletin. Presented in draft form and open for discussion and refinement.

Clients – Individuals

Risk indicators related to accounts and behaviours of individual persons

RED FLAG: Individuals associated with gambling and casinos in Macau.

Clients – Corporates

Risk indicators related to corporate and business clients

RED FLAG: Timber companies dealing with plywood and other forms of processed wood from African countries to China.

RED FLAG: Companies dealing with agarwood with insufficient due diligence and supply chain integrity controls to avoid the use of illicit wood.

TASKFORCE ALERTS

Consistently Ahead of the Game



TRANSPORT TASKFORCE

Transport Taskforce ALERT

Painting Wildlife Products as a Concealment Method for Illegal Ivory and Rhino Horn

15 January 2018

Red Flags

- Large quantities of similarly shaped painted items
- Items painted red or black

TASKFORCE ALERTS

Consistently Ahead of the Game

GULF NEWS 

CRIME

1,849 pieces of ivory seized at Dubai airport

Ivory pieces painted in black being smuggled in boxes with shoe tags

Ali Al Shouk, Staff Reporter

🕒 16:58 July 3, 2018



TASKFORCE ALERTS

Consistently Ahead of the Game



TRANSPORT TASKFORCE

Transport Taskforce ALERT

Concealment Methods for Pangolin Scales from West Africa

01 April 2017

Red Flags

Shipments with the following profile may indicate a higher risk of wildlife trafficking and/or warrant enhanced due diligence

Country of Origin: CAMEROON, GHANA, **NIGERIA**

Destination Country: CAMBODIA, CHINA (**HONG KONG**), LAO PDR, VIET NAM

Description of Goods: **PLASTICS** (HS code 39 series)

TASKFORCE ALERTS

Consistently Ahead of the Game



Customs and Excise Department

The Government of the Hong Kong
Special Administrative Region

Press Releases

Hong Kong Customs seizes suspected pangolin scales (with photo)

5 January 2018

Hong Kong Customs today (January 5) seized about 1,800 kilograms of suspected pangolin scales from a container with an estimated market value of about \$2.8 million...

Through risk assessment, Customs officers inspected a 40-foot container declared to contain plastic materials arriving in Hong Kong from Nigeria.

Regular Intelligence Sharing

INTELLIGENCE & ANALYSIS OUTPUTS (2019)

150+	Companies regularly receiving Taskforce intelligence
-------------	--

68	New actionable red flags & typologies developed
-----------	---

55	Professional intelligence products disseminated
-----------	---

3. Direct Coordination with Law Enforcement

*Direct Coordination with Law Enforcement***Direct Coordination with Law Enforcement**

The Transport Taskforce is a **force multiplier** for law enforcement against wildlife trafficking.

- Requests for Information & Assistance
- Personal connections and networking
- Subject matter expertise / advisory
- Targeting algorithm refinement
- Direct case collaboration

THE UFW TASKFORCE

Direct Coordination with Law Enforcement



Uganda, Jan 2019: \$8 million of ivory / pangolin seized in shipment of timber.

Example:

- **31** suspicious containers identified.
- Full documentation obtained for **29**.
- **8** interdictions facilitated across 3 countries.
- Various significant analytic / investigative outcomes

THE UFW TASKFORCE

Direct Coordination with Law Enforcement

Recent Successes

- **Post-Seizure Investigations**

RESULT: Seizures now the beginning not the end (avg. 1-2 requests per week)

- **Support to Company Insider Threat Investigations**

RESULT: Linked company insider threat case to known trafficker / trafficking network

- **Strategic Partnerships**

RESULT: Taskforce now a key, trusted conduit for information and action between law enforcement, private sector, and on-the-ground partners



THE UFW TASKFORCE

Direct Coordination with Law Enforcement

Scorecard

TASKFORCE ENFORCEMENT CONTRIBUTIONS (2019)

6

**Arrests / indictments
of wildlife traffickers**

101

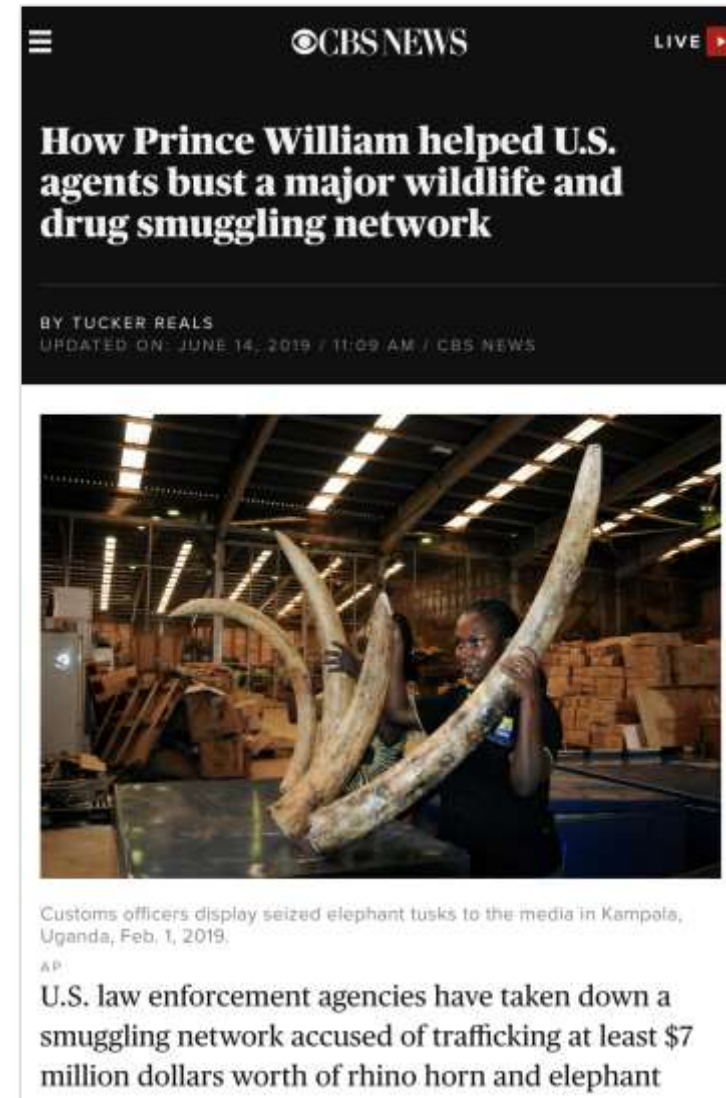
**Interdictions of
suspect shipments**

82

**Illegal wildlife
shipments seized**

70+

**Law enforcement
investigations supported**

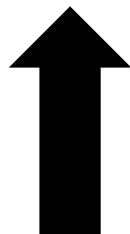




*The UFW Transport Taskforce
Future Vision*

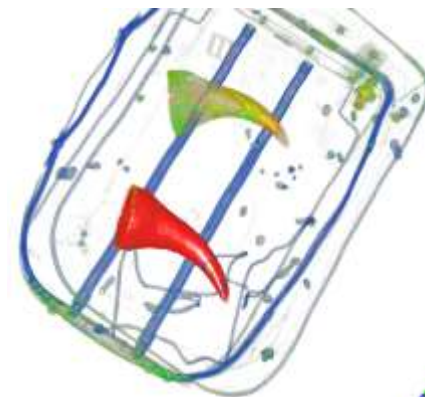
What's Next?

Scale UP



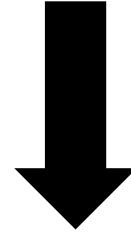
Prioritize efforts with potential for global impact

- Ambition is to help **take down ALL existing major syndicates**, especially involving ‘untouchables’
- Design, incubate, & accelerate **scalable technologies**:
 - **AI-driven targeting systems**, for suspicious cargo / baggage / passenger targeting
 - **Automated customer screening** systems for IWT
 - **Shared info resources** (portal, databases) to build connections and align efforts among all stakeholders
- Contribute evidence/expertise for **international policy reform & standard setting** (e.g. FATF)
- **Systematize infrastructure** and related admin/legal



What's Next?

Scale DOWN



Ensure sustainable action on the ground

- Localized **national & regional Taskforce chapters**, using Kenya chapter as a model
- Facilitate **lasting country-level connections** among member companies, enforcement, and NGO stakeholders
- Mentor & build capacity on-the-ground to ensure **long term sustainment of Taskforce-enabled action** without direct involvement of 'Taskforce HQ'



What's Next?

Scale OUT ↔

Make saving wildlife business as usual

- **Help win bureaucratic argument** in governments to treat IWT as seriously as other transnational crimes and threats
- Fully integrate IWT intelligence into company **risk management and legal/compliance** activities
- Explore how IWT intelligence can contribute to **core business activities**, e.g. innovative lending products, impact investment, R&D, business intelligence
- **Leveraging global ESG trend** for action against IWT



CONCLUSION



We need to **think big.**

It's entirely possible to **permanently end** industrial scale wildlife trafficking. Public-private partnership is a critical component of any winning strategy.

